

Whānau Newsletter

Term Two 2025



Welcome to Term Two Whānau



"Ka kitea a Matariki, ka rere te korokoro" - "When Matariki is seen, the lamprey migrate"

Dates for Term 1, 2025

28 April	Term 2 starts
12-13 May	ERO visit
14-20 May	Parent Focus
24 May	Hangout at Punnet Eatery
2 June	Public holiday - King's birthday
18 June	Matariki whānau event
20 June	Public holiday - Matariki
TBA	Richard will provide a two-part workshop on sleep on Wed and Fri
27 June	End of term 2
14 July	Start of term 3

Staff Updates

Welcome to:

Muriel Garcés – Early Intervention teacher: Kia ora McKenzie whānau, my name is Muriel; I am from Chile. I have been in New Zealand for eight years with my husband Matus and our son Maximiliano. I am an Early Childhood Teacher, and I am in my second year of Early Intervention teaching. I have been working in Education for twenty years; I am passionate about education and supporting the unique needs of each tamariki and their whanau. I love building authentic relationships with people, spending time with my family, listening to all kinds of music; it connects me deeply with my emotions. I am so happy and grateful to be part of McKenzie whānau. Tēnā koutou katoa (Thank you all). "Nā tō rourou, nā taku rourou ka ora ai te iwi" "With your food basket and my food basket, the people will thrive."



Emma Greaves - Tuakana. Hello, my name is Emma and I am one of the new Tuakana at McKenzie Centre. I started out as a parent here with my son Isaiah, who has now started school. I can't wait to get to know everyone that comes to the Centre.



Staff Updates continued

Farewell to:

Diana Montgomerie, Early Intervention teacher. We were sad to farewell Diana at the end of term 1. We wish her well on her new adventure.

ERO visit

The Education Review Office Team will be visiting McKenzie Centre on Monday 12 and Tuesday 13 May 2025



Early Intervention Teachers at McKenzie Centre

Stephanie, Michael, Larissa, Rachael and Muriel are the Early Intervention Teachers at McKenzie Centre. We have vast experience and knowledge in early childhood education, specifically in Early Intervention. We are all qualified teachers.



Sensory processing

Te Whatu Ora Waitaha, Canterbury have sensory online training on their website. This can be accessed here: https://www.cdhb.health.nz/Content/WEB_LetsTalkAboutSensoryProcessing_18082023/content/index.html#/

Kids don't come with a manual

Whakaata Māori TV has a programme called Kids Don't Come with a Manual with Nathan Wallis. It's a weekly show that talks with parents about their children and themselves combining neuroscience with Tikanga Maori to negotiate the prickly points of parenting. Past episodes can be found on their website: <https://www.maoriplus.co.nz/show/kids-dont-come-with-a-manual> until 29th July.

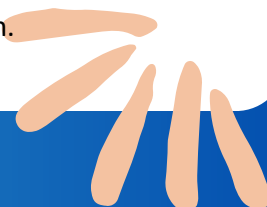
Curriculum Updates and Areas of Focus for Term 2

As a team, we enjoy meeting the diverse learning needs of McKenzie Centre children. At the beginning of each term, we plan together as a team to formulate goals for each McKenzie Centre session.

This term you will find a particular focus on children's communication, whether this be sign language, AAC or extension of verbal communication skills. Secondly, music will continue to be a focus with more emphasis on actions and moving our bodies with the use of te reo māori. And our third focus will include mini workshops for our parents to attend. Please take advantage of these workshops as they are a great way to extend your learning and support your child.

Please bring kai and a water bottle for your child's morning tea, to be enjoyed during the session.

Planning for our playground development is on-going - we will keep you posted as plans evolve!



It's Child's Play!!! WHY do we NEED to play with our kids???

We talk a lot about the value of play at McKenzie Centre, while exploring and extending play with our tamariki and in our whanau workshops. Apart from allowing us into our child's world to strengthen our shared connection, play is absolutely essential for a child's development—it's not just fun, it's how kids learn, grow, and make sense of the world. On the following page there is a list of different types of play, what your child is learning and ways we can extend their individual interests.

Types of play:

Schema	What You Might See	Learning Involved	Activity Ideas to Support It
Trajectory	Throwing, dropping, running, swinging arms, jumping	Physics, motion, force	Throwing soft balls, water squirters, scarf toss, ramps
Transporting	Moving objects around, filling/dumping containers	Quantity, spatial awareness, organization	Toy shopping carts, buckets, baskets, treasure hunts
Enclosure	Creating boundaries, sitting in boxes, circling objects	Inside vs. outside, containment, safety	Hula hoops to sit in, build fences or "pens" with blocks
Enveloping	Wrapping objects, hiding under blankets, covering hands	Disappearance, protection, layering	Wrapping toys, sensory bins with sand/rice, dress-up play
Rotation	Spinning wheels, twirling, turning doorknobs or self	Circular motion, control, mechanics	Spinners, lazy Susans, tops, rolling paint, rotating art
Connecting	Linking or taping items, building structures	Construction, relationships, permanence	LEGO, train tracks, paper chains, tape + straw building
Positioning	Lining up objects, stacking neatly, symmetrical setups	Order, classification, visual organization	Pattern blocks, matching games, sticker symmetry activities
Orientation	Looking upside down, climbing under, unusual body positions	Perspective, spatial awareness	Obstacle courses, yoga, looking through kaleidoscopes
Transforming	Mixing substances, watching change, sensory experimentation	Change, cause and effect, process	Mud kitchen, baking, potion-making, color mixing

Sign IN and OUT every session

We encourage you to stay for the full session. There are a lot of important learning opportunities for you and your child. Please sign in on arrival, and out when you leave, as this is an early childhood licensing requirement from the Ministry of Education.

To make the session flow, we have made some changes to the session routine:

10:15 – 10:45 am: Fast Focus workshops

10:45 am: music time

THURSDAY:

12.45: Music

1pm: Fast Focus Workshops



Health and Safety at McKenzie Centre

Emergency drills:

We practice fire and earthquake drills in session and lockdown drills with the staff only. These drills are practised every three months. We will have a Fire Drill on 21 May and Earthquake & Lockdown Drill 28 May. This is an early childhood licensing requirement so we are all prepared should an emergency event occur. If you are unsure what to do, please talk with the staff.

Medication:

If you are bringing any medication, including Paracetamol, Disprin or EpiPens etc. into McKenzie Centre, please leave it in the office for safe keeping. Little fingers can get into bags left unattended.

Allergies:

Please let us know if your child has any allergies (food and other) so that we can adjust our planning around safety. Many of you have done this as part of the enrolment procedure but let us know if there are any changes.

Changes to attendance

If you have or would like to make changes to the day that you attend McKenzie Centre, please talk with your contact person and have a chat with Henny in the office. We also need to know if your child's enrolment days/hours at Early Childhood Education Centres have changed as this affects funding claims.

Loan Items

Please remember to bring back any toys or items that your whānau borrowed. If you're still using them, please touch base with your contact person.

Early Intervention Fees

We have an Eftpos machine at McKenzie Centre, so you can make payments when you are here. Please see Henny or Lillian who are happy to help you. Thank you for supporting McKenzie Centre with your payment of the Early Intervention Fees. They are essential to the running of our service. The WINZ Childcare Subsidy is available for many families and may cover the entire cost of the Early Intervention Fee. Household income threshold amounts have changed on 1 April so if you didn't qualify beforehand, you might do so now. We can help you apply for this, or find another option for you, so that your financial burden is eased. Please see your contact person or the Admin team – we are happy to help. Some people pay us a smaller amount every week – talk to Henny or Lillian and they will help you with this.

If you're a MSD/Work and Income client, you can apply for Childcare Subsidy using RealMe on the SmartStart website, or if you prefer, you can continue to apply through MyMSD or on paper.

Policies and Procedures

All Policies and Procedures are on a review cycle, so they always remain current and relevant. A full list is available in the yellow "Licence, Policies, ERO Report" folder in the Whānau Room.

Those under review will be shared during Parent Focus week or listed on the wall in the Whānau Room and families' opinions are an important part of this review process. If you want to know more about any Policy, Procedure or how they are reviewed feel free to ask Lillian.



Thanks So Much To All Our Volunteers & Sponsors

We are very grateful to the many people and organisations that support McKenzie Centre and the work we do.
We could not do what we do without you.



Chris Ball, one of our volunteers,
fixing the kids' gate



Shanayd (on the left), one of our Tuakana,
chatting to a parent



Emma (on the right), one of our Tuakana,
chatting to a parent



Best wishes from: Beverley, Suzanne, Rachael S, Henny, Lillian, Steph, Emma, Rachael F, Richard, Susie, Eram, Victoria, Siobhan, Larissa, Shanayd, Liesl, Chrissy, Michael, Nikki and Muriel.